

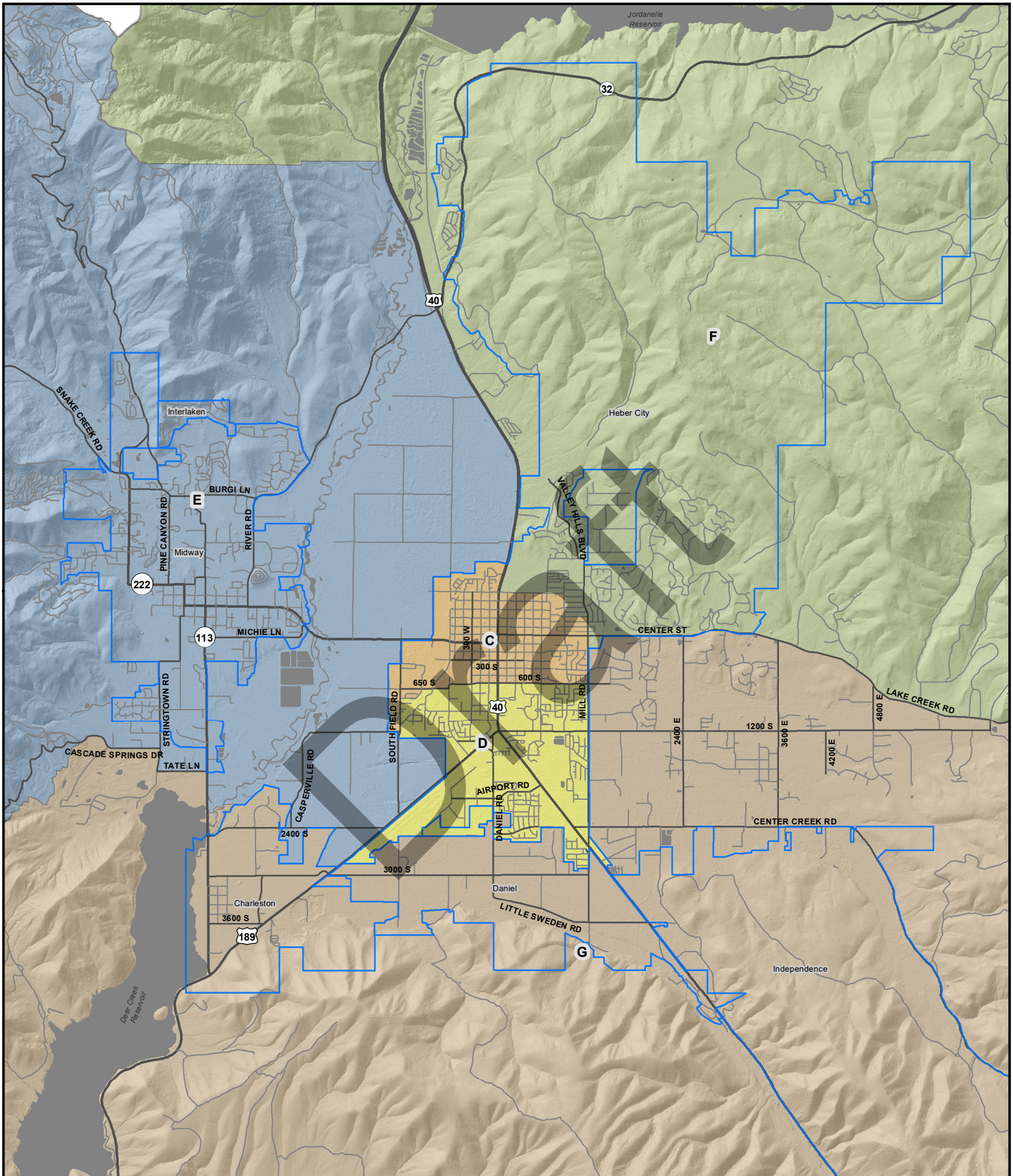
Wasatch County
 2022-2032
 Council/Sch. Board Districts
 Proposal Four

District Area	Population Total	Population Deviation	Population Deviation %
C	7014	56	0.8
D	7090	132	1.89
E	6912	-46	-0.66
F	6802	-156	-2.24
G	6970	12	0.17

Plan Description

Seat C has county included. Seat D is Heber City only. Charleston is moved to Seat G. Northfields and Southfields are in Seat E





Wasatch County

2022-2032

Council/Sch. Board Districts

Proposal Four

District Area	Population Total	Population Deviation	Population Deviation %
C	7014	56	0.8
D	7090	132	1.89
E	6912	-46	-0.66
F	6802	-156	-2.24
G	6970	12	0.17

Plan Description

Seat C has county included. Seat D is Heber City only. Charleston is moved to Seat G. Northfields and Southfields are in Seat E

