

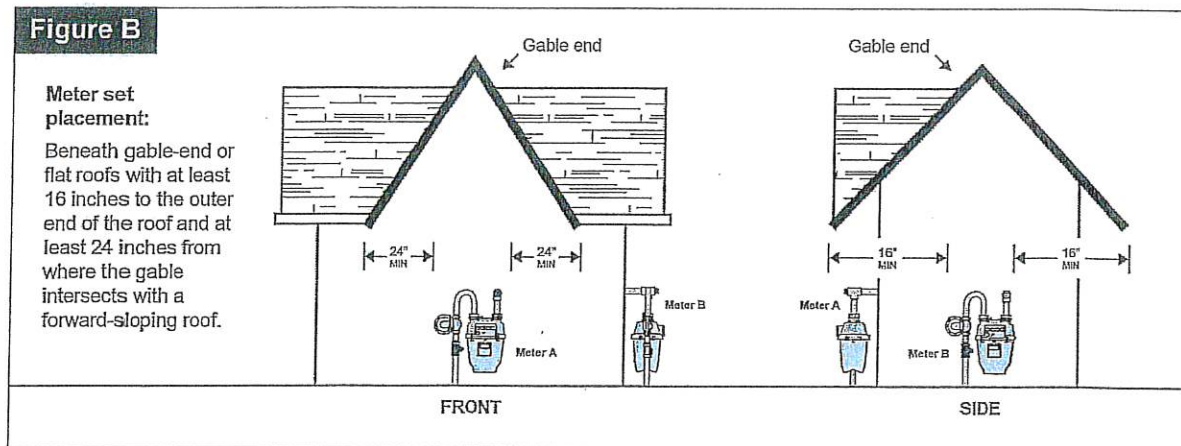
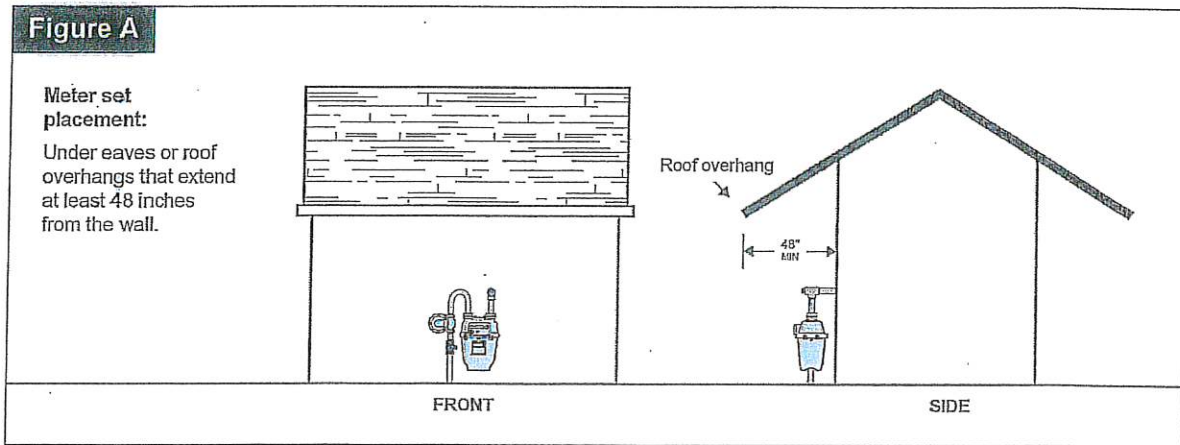
**\*\*EFFECTIVE IMMEDIATLEY\*\***

Meter protection needs to be complete prior to requesting your Gas Line Test Inspection. No clearances will be sent to Dominion until meter protection is in place and verified at time of gas line test inspection. See attached specifications.

## Gas Meter Protection

In heavy snowfall areas, a meter set should be placed in an area that will be protected from heavy snow accumulation and from snow sliding off roofs, such as:

- Inside of or underneath a structure,
- Under eaves or roof overhangs that extend at least 48 inches from the wall (see Figure A),
- Beneath gable-end or flat roofs with at least 16 inches to the outer end of the roof and at least 24 inches from where the gable intersects with a forward-sloping roof. (see Figure B).



For typical residential meters, customer-constructed snow shelters should meet the guidelines in Figure C. Please consult with your Pre-Construction representative.

