

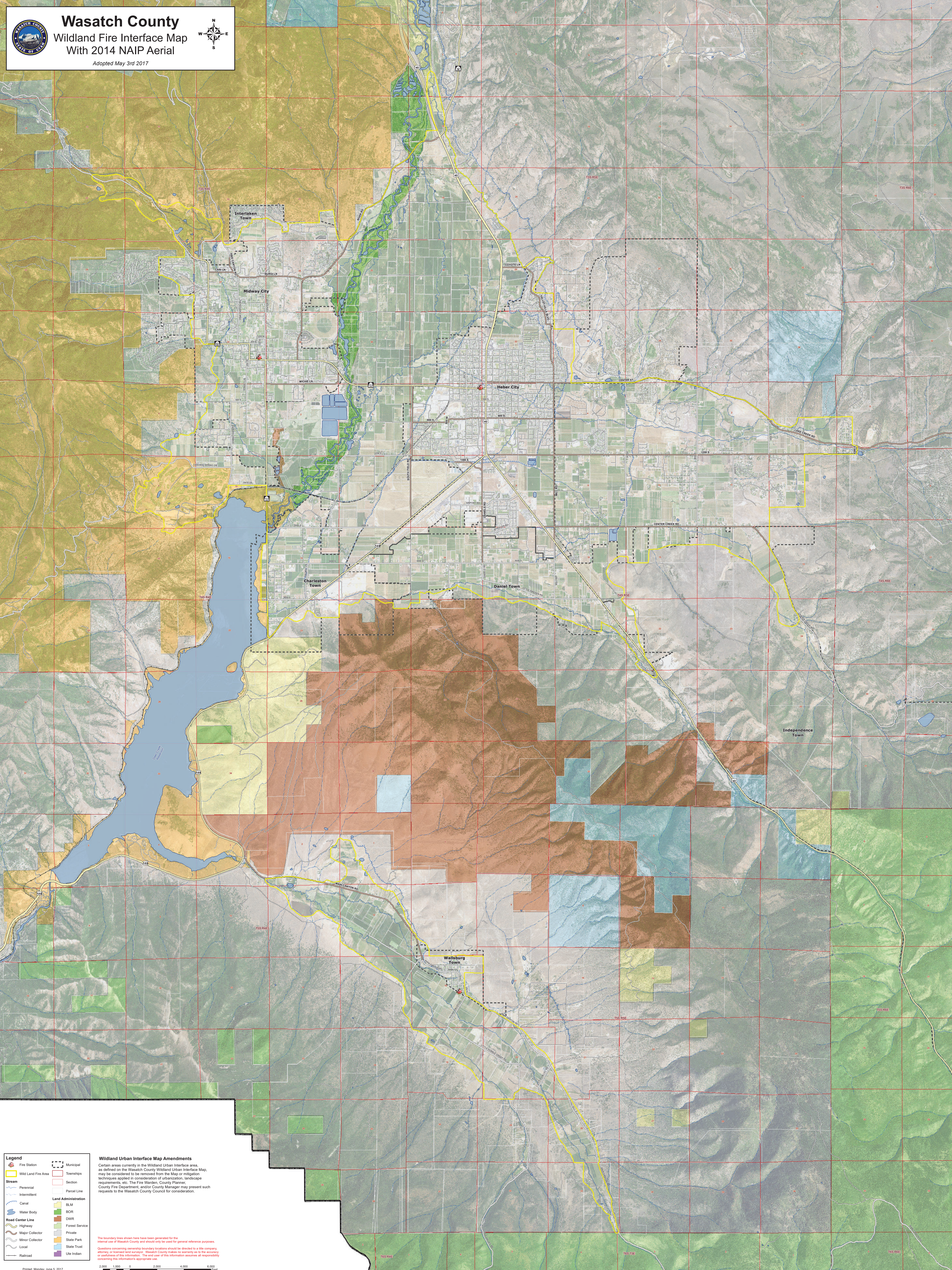
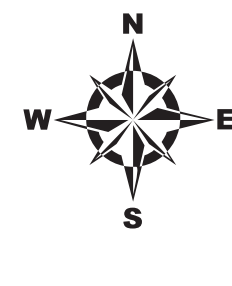


Wasatch County

Wildland Fire Interface Map

With 2014 NAIP Aerial

Adopted May 3rd 2017



Legend

- Fire Station
- Wild Land Fire Area
- Stream
 - Perennial
 - Intermittent
 - Canal
 - Water Body
- Road Center Line
 - Highway
 - Major Collector
 - Minor Collector
 - Local
 - Railroad
- Municipal
- Townships
- Section
- Parcel Line
- Land Administration
 - BLM
 - BOR
 - DWR
 - Forest Service
 - Private
 - State Park
 - State Trust
 - Line Indian

Wildland Urban Interface Map Amendments

Certain areas currently in the Wildland Urban Interface area, as defined on the Wasatch County Wildland Urban Interface Map, may be considered to be removed from the Map or mitigation techniques applied in consideration of urbanization, landscape requirements, etc. The Fire Warden, County Planner, County Fire Department, and/or County Manager may present such requests to the Wasatch County Council for consideration.

The boundary lines shown here have been generated for the internal use of Wasatch County and should only be used for general reference purposes.

Questions concerning ownership boundary locations should be directed to the company, attorney, or licensed land surveyor. Wasatch County makes no warranty as to the accuracy or usefulness of this information. The end user of this information assumes all responsibility concerning the information's appropriate use.

Printed: Monday, June 5, 2017

2,000 0 2,000 4,000 6,000 Feet