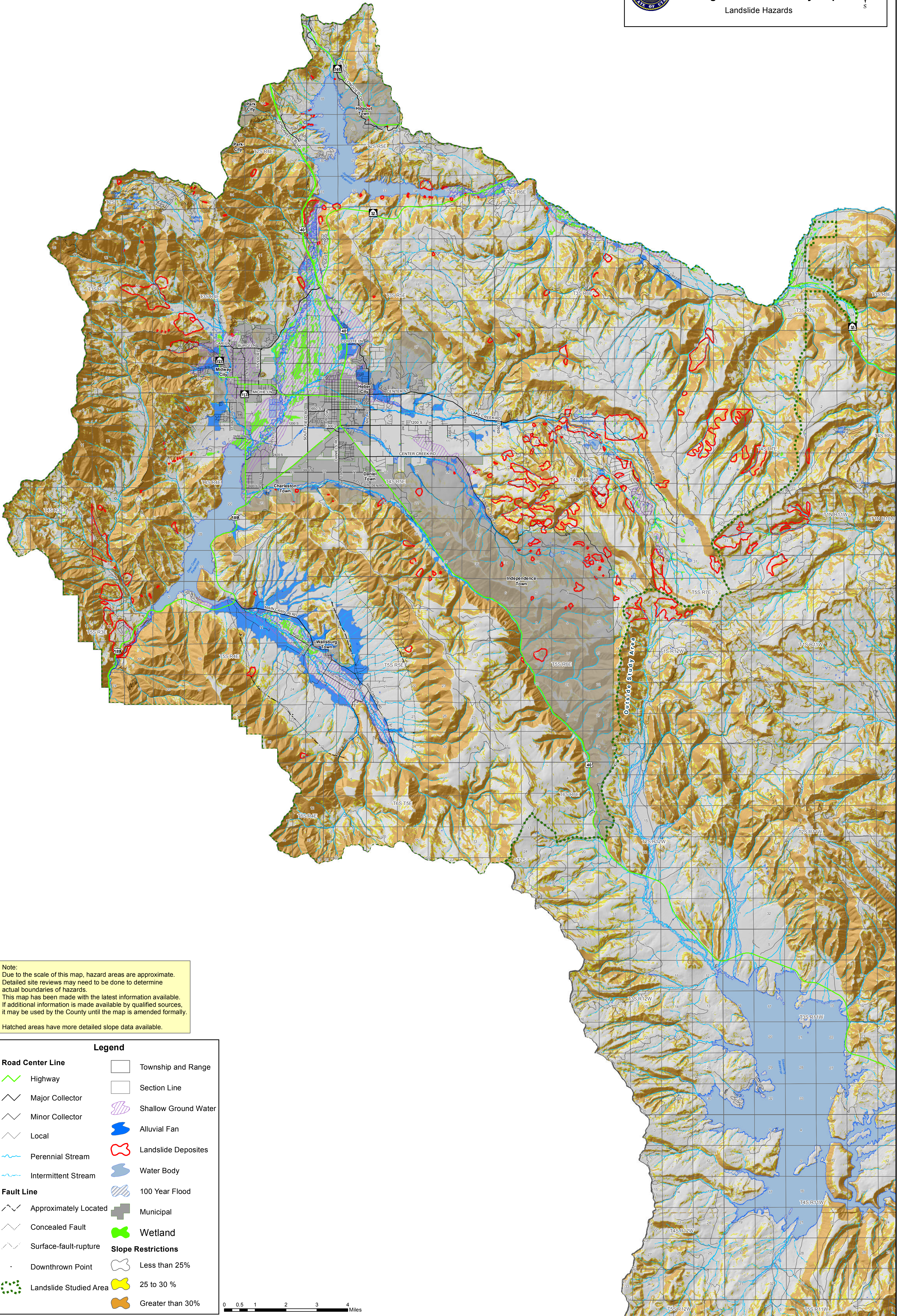
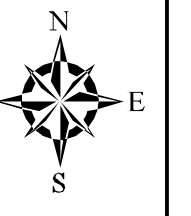




Wasatch County Geologic Hazards Overlay Map

Landslide Hazards



Note:
Due to the scale of this map, hazard areas are approximate. Detailed site reviews may need to be done to determine actual boundaries of hazards. This map has been made with the latest information available. If additional information is made available by qualified sources, it may be used by the County until the map is amended formally. Hatched areas have more detailed slope data available.

Legend	
Road Center Line	Township and Range
Highway	Section Line
Major Collector	Shallow Ground Water
Minor Collector	Alluvial Fan
Local	Landslide Deposites
Perennial Stream	Water Body
Intermittent Stream	100 Year Flood
Fault Line	Municipal
Approximately Located	Wetland
Concealed Fault	Slope Restrictions
Surface-fault-rupture	Less than 25%
Downthrown Point	25 to 30 %
Landslide Studied Area	Greater than 30%

