

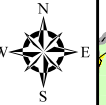


Wasatch County

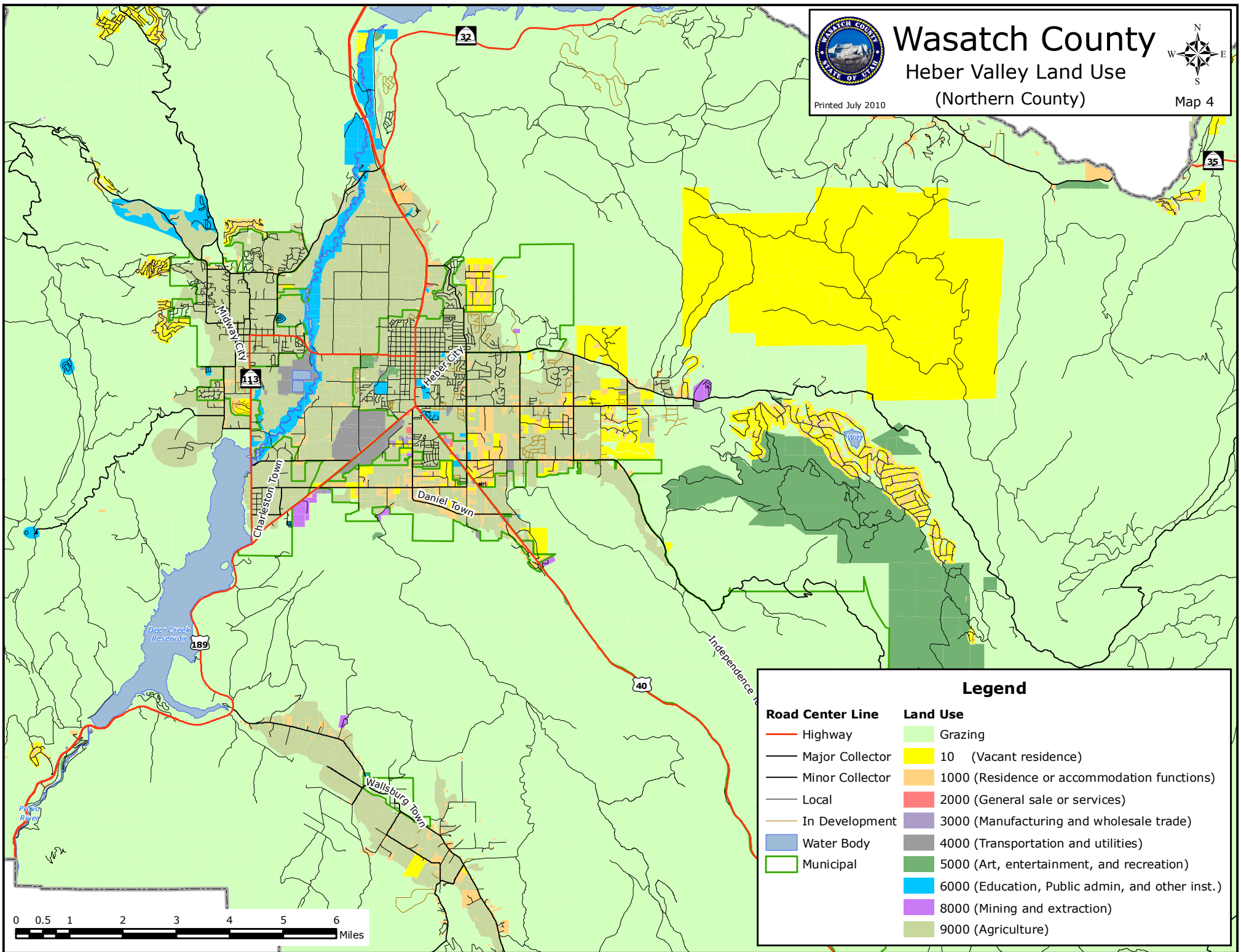
Heber Valley Land Use

(Northern County)

Printed July 2010



Map 4



Legend

Road Center Line

- Highway
- Major Collector
- Minor Collector
- Local
- In Development
- Water Body
- Municipal

Land Use

- Grazing
- 10 (Vacant residence)
- 1000 (Residence or accommodation functions)
- 2000 (General sale or services)
- 3000 (Manufacturing and wholesale trade)
- 4000 (Transportation and utilities)
- 5000 (Art, entertainment, and recreation)
- 6000 (Education, Public admin, and other inst.)
- 8000 (Mining and extraction)
- 9000 (Agriculture)

