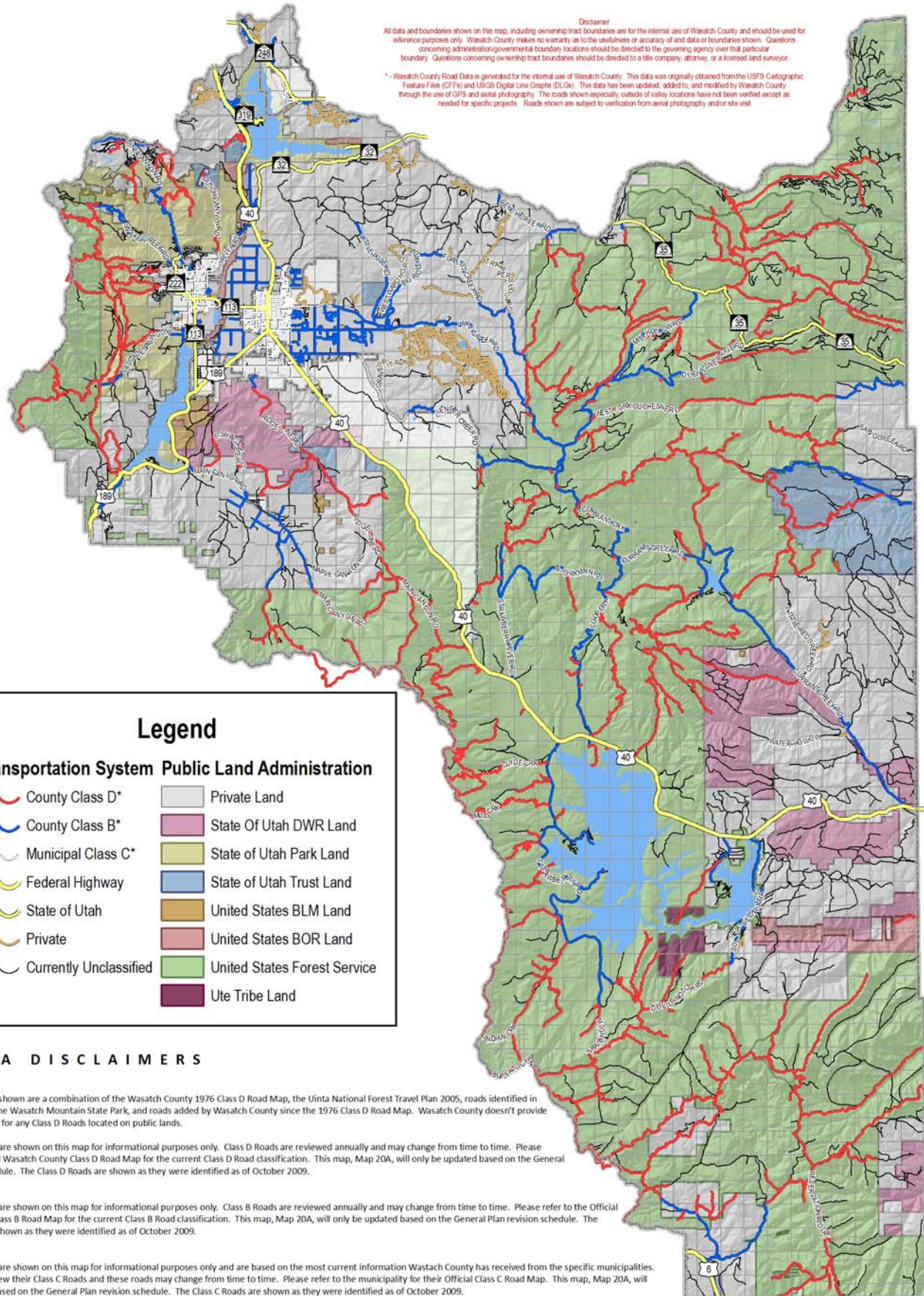


Disclaimer
 All data and boundaries shown on the map, including ownership tract boundaries are for the internal use of Wasatch County and should be used for reference purposes only. Wasatch County makes no warranty as to the usefulness or accuracy of data or boundaries shown. Questions concerning administration/governmental boundary locations should be directed to the governing agency over that particular boundary. Questions concerning ownership tract boundaries should be directed to a title company, attorney, or a licensed land surveyor.

* Wasatch County Road Data is generated for the internal use of Wasatch County. This data was originally obtained from the USFS Cartographic Feature Files (CFs) and USGS Digital Line Graphs (DLGs). This data has been updated, added to, and modified by Wasatch County through the use of GPS and aerial photography. The roads shown especially, outside of valley locations have not been verified except as needed for specific projects. Roads shown are subject to verification from aerial photography and/or site visit.



Legend

Transportation System Public Land Administration

- | | |
|------------------------|------------------------------|
| County Class D* | Private Land |
| County Class B* | State Of Utah DWR Land |
| Municipal Class C* | State of Utah Park Land |
| Federal Highway | State of Utah Trust Land |
| State of Utah | United States BLM Land |
| Private | United States BOR Land |
| Currently Unclassified | United States Forest Service |
| | Ute Tribe Land |

* DATA DISCLAIMERS

Class D Roads:
 The Class D Roads shown are a combination of the Wasatch County 1976 Class D Road Map, the Uinta National Forest Travel Plan 2005, roads identified in conjunction with the Wasatch Mountain State Park, and roads added by Wasatch County since the 1976 Class D Road Map. Wasatch County doesn't provide road maintenance for any Class D Roads located on public lands.

The Class D Roads are shown on this map for informational purposes only. Class D Roads are reviewed annually and may change from time to time. Please refer to the Official Wasatch County Class D Road Map for the current Class D Road classification. This map, Map 20A, will only be updated based on the General Plan revision schedule. The Class D Roads are shown as they were identified as of October 2009.

Class B Roads:
 The Class B Roads are shown on this map for informational purposes only. Class B Roads are reviewed annually and may change from time to time. Please refer to the Official Wasatch County Class B Road Map for the current Class B Road classification. This map, Map 20A, will only be updated based on the General Plan revision schedule. The Class B Roads are shown as they were identified as of October 2009.

Class C Roads:
 The Class C Roads are shown on this map for informational purposes only and are based on the most current information Wasatch County has received from the specific municipalities. Municipalities review their Class C Roads and these roads may change from time to time. Please refer to the municipality for their Official Class C Road Map. This map, Map 20A, will only be updated based on the General Plan revision schedule. The Class C Roads are shown as they were identified as of October 2009.



Wasatch County

Non-Urban Master Transportation and Road Classification*

