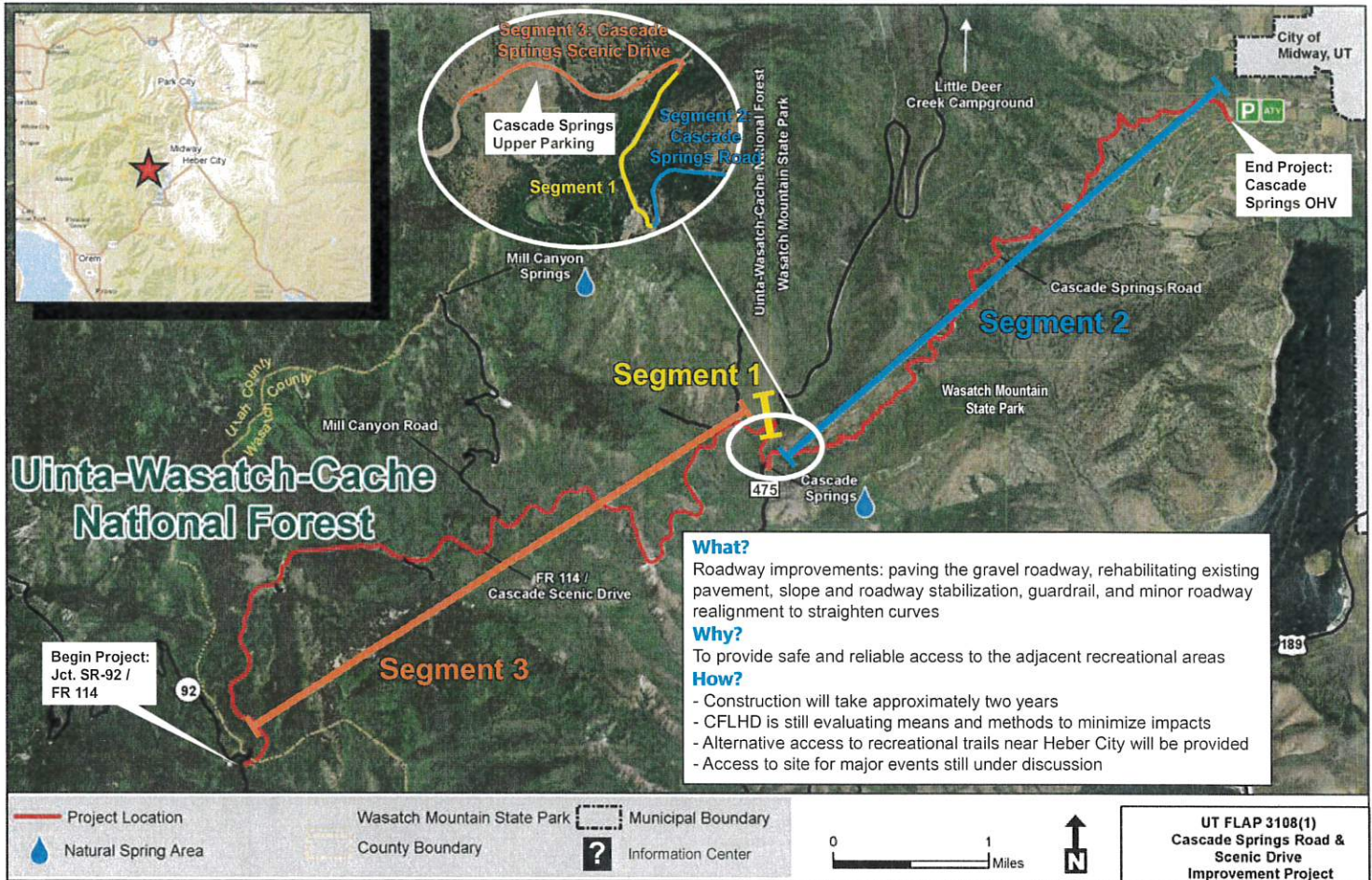


Cascade Scenic Drive (FH-144)/ Cascade Springs Road Improvement Project



Project Description

Central Federal Lands Highway Division (CFLHD), in partnership with Wasatch County, the United States Forest Service, and Utah State Parks is planning to improve Cascade Scenic Drive/Cascade Springs Road between SR-92 and the park boundary adjacent to the community of Midway.

For the western half (from SR-92 to Cascade Springs), the project includes pavement rehabilitation. For the eastern half (from Cascade Springs to the eastern park boundary), the project includes complete roadway reconstruction, including slope and roadway stabilization, guardrail, retaining walls, minor roadway realignment to straighten curves, and drainage enhancements.

Route Closure Preliminary Schedule

	2020											
	A	M	J	J	A	S	O	N	D			
Segment 1				Closed	Closed	Closed	Open	Open	Open	Open	Open	Open
Segment 2		Seasonal Closure										Seasonal Closure
Segment 3				Closed	Closed	Closed	Open	Open	Open	Open	Open	Open

Road Closures Considerations

Construction of these improvements while minimizing impacts to users is a key objective. To accommodate public safety, the road will be closed during various construction activities. When the road is open, delays of up to 30 minutes can be expected. The schedule is subject to change at any time.

Access to the Cascade Springs visitor site will be accessible to the upper parking lot from SR92 via Cascade Springs Scenic Drive or Little Deer Creek Campground Road. When the road is closed no motorized vehicles and no pedestrian access will be permitted on the route. During construction work where a potential conflict between construction equipment and an OHV may be possible, OHV access will be restricted for public safety. During road closures, OHV trail routes will continue to be open. Emergency access will be permitted at all times.

Questions?

Wasatch County Public Works
891 West 3000 South
Heber City, Utah 84032
435-654-1661
www.wasatch.utah.gov

Wasatch Mountain State Park
Midway, UT 84049-0010
Visitor Center: 435-654-1791
www.stateparks.ut.gov

United States Forest Service
Pleasant Grove Ranger District
390 North 100 East
Pleasant Grove, UT 84062
801-785-3563



Cascade Springs Road Closure

Printed: 5/13/2020



★ Cascade Springs

Road Status

- CLOSED
- Cascade Springs Access

Road

- Highway
- Collector
- Local
- Local Private
- - - Proposed
- Municipal
- County Boundary

